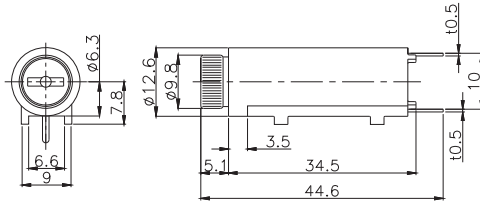
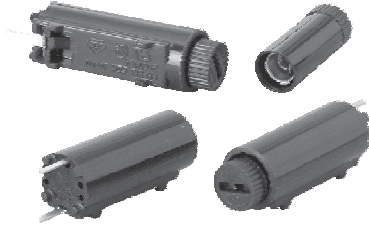
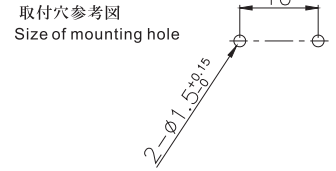


FH-B13VA   

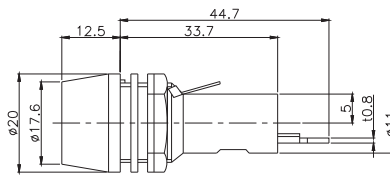
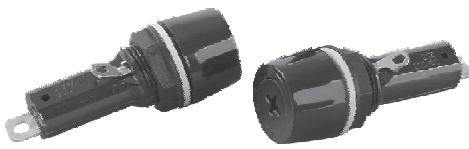


Rating : 10A
 定格

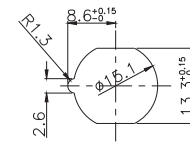
Matching Fuse : $\phi 5.2 \times 20$
 適合ヒューズ



FH-052S



取付穴参考図
 Size of mounting hole

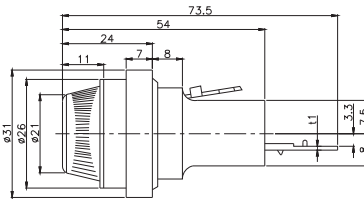


Rating : 20A
 定格

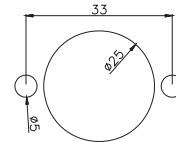
Matching Fuse : $\phi 6.35 \times 31.8$
 適合ヒューズ : $\phi 6.4 \times 30$

Certified by Electrical Appliance Material Safety Law
 電気用品安全法準拠品

FH-061F



取付穴参考図
 Size of mounting hole



Rating : 30A
 定格

Matching Fuse : $\phi 10.31 \times 38.1$
 適合ヒューズ

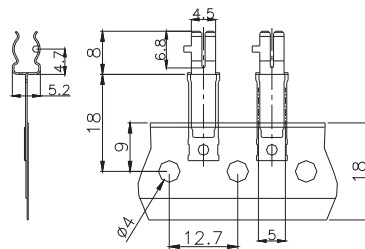
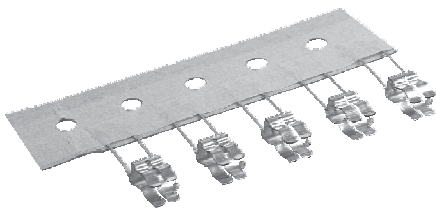
Faston Terminal : #250
 ファストン端子

ヒューズクリップ(Fuse clip)

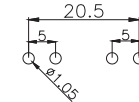
定格 : 10A 250V
 接触抵抗 : 10m Ω 以下のこと

Rating: 10A 250V
 Contact resistance: Under 10m Ω

FC-05C-E

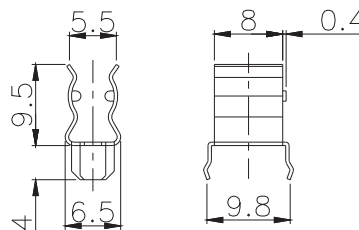
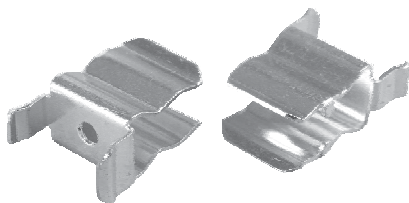


取付穴参考図
 Size of mounting hole



適合ヒューズ : $\phi 5.2 \times 20$
 Matching Fuse:

FC-06



適合ヒューズ : $\phi 6.35 \times 31.8$
 Matching Fuse:

※プレス、成型は金型から全て社内での一貫生産方式です