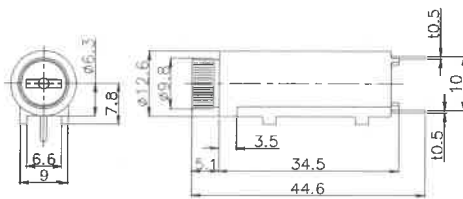


FH-B13VA 



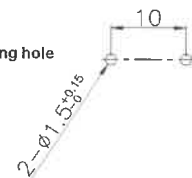
Rating : 10A

定格

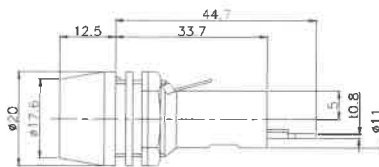
Matching Fuse : ϕ 5.2*20

適合ヒューズ

取付穴参考図
Size of mounting hole



FH-052S



Rating : 20A

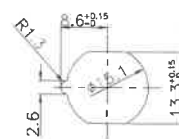
定格

Matching Fuse : ϕ 6.35*31.8

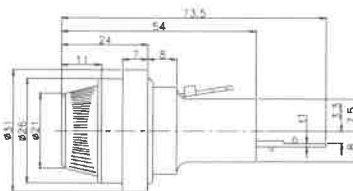
適合ヒューズ

Certified by Electrical Appliance Material Safety Law
電気用品安全法準拠品

取付穴参考図
Size of mounting hole



FH-061F



Rating : 30A

定格

Matching Fuse : ϕ 10.31*38.1

適合ヒューズ

Faston Terminal #250
ファストン端子

取付穴参考図
Size of mounting hole

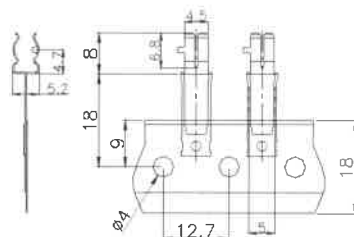
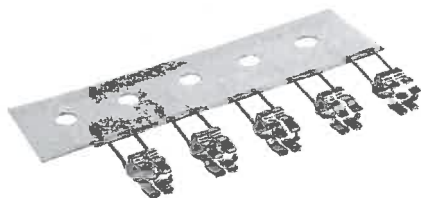


ヒューズクリップ(Fuse clip)

定格 : 10A 250V
接触抵抗 : 10m Ω 以下のこと

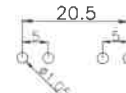
Rating: 10A 250V
Contact resistance: Under 10m Ω

FC-05C-E

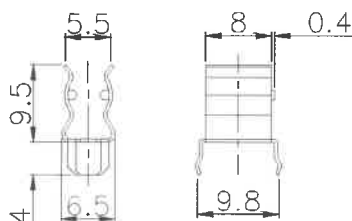


適合ヒューズ : ϕ 5.2*20
Matching Fuse:

取付穴参考図
Size of mounting hole



FC-06



適合ヒューズ : ϕ 6.35*31.8
Matching Fuse:

※プレス、成型は金型から全て社内での一貫生産方式です